

# TRBOmonitor

## 24/7/365 Cloud-Based System Health Monitoring Service

TRBOmonitor is a simple yet powerful service for proactive diagnostic that provides real-time constant monitoring of your MOTOTRBO radio network and sends alerts on critical conditions or when it needs attention.

On single site conventional, IP Site Connect, Capacity Plus or Linked Capacity Plus systems:

- Critical alerts indicate that a repeater needs immediate attention
- Interference, out of range, repeater alarms and other warnings highlight underlying systems issues
- Busies, race conditions and other alerts suggest that a system upgrade may be required to add more capacity.
- Temporary repeater timeouts may point to multi-site backhaul issues.

### THIN ON-PREMISE CLIENT

Run the client software on any PC or virtual machine with connectivity to the master repeater and the Internet. Multi-homed system support allows internet access over guest networks, WiFi, or cellular.

### TECHNICIAN TOOL

- Essential when diagnosing new or existing systems.
- Can run without internet access

### AUTOMATIC REPEATERS DETECTION

The client discovers and displays all the peers, including MNIS, RDAC and 3<sup>rd</sup> party applications. It detects each repeater's alias, firmware version, serial/model number and other information.

- Periodically receive VSWR, TX power and temperatures and alert when limits are exceeded
- Remotely clear alarms, disable and reset the repeaters

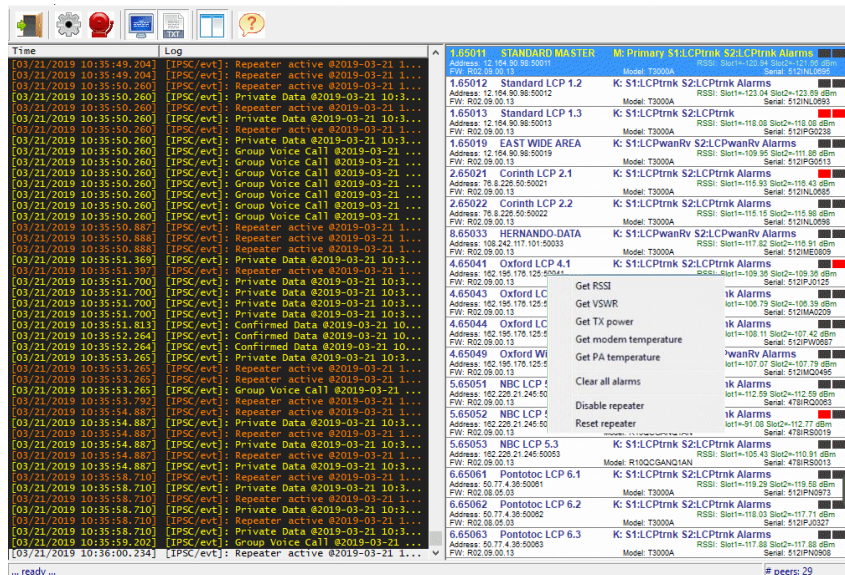
### HOSTED SERVICE

No need to be concerned whether monitoring is active: receive an alert as soon as the PC fails or the link to the fault-tolerant cloud server is disrupted because of failed internet connectivity or internal network issues.

### YEARLY SUBSCRIPTION MODEL

All-inclusive plan:

- Per system, not per repeater or per subscriber
- Thin client software included
- Unlimited support and maintenance
- No setup fees



### NOTIFICATIONS

Receive short emails/SMS for:

- Master/peer up or down
- Call failure conditions: busies, out of range, race conditions, etc.
- Repeater blocked for interference or CWID repeat
- 70+ RDAC repeater alarms.

All alerts and alarms can be individually enabled

### REAL-TIME LOGGING

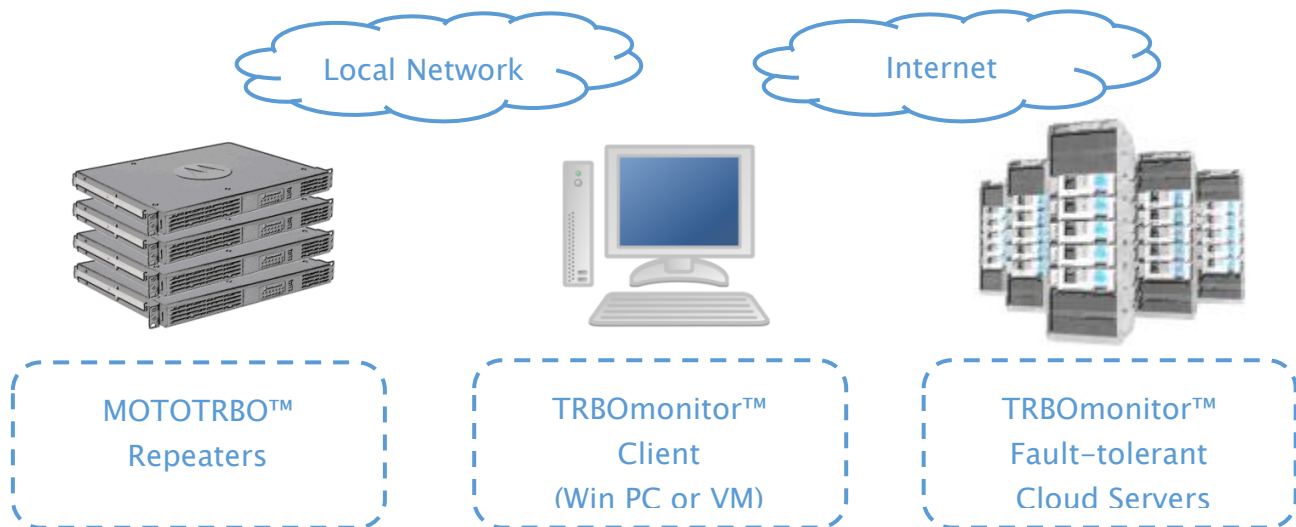
Every event, including voice/data calls are logged:

- Locally on the client PC in both text and Excel files
  - Remotely on the fault-tolerant host databases
- RSSI is also reported for every over-the-air transmission.

### RAPID DEPLOYMENTS - No NAI licenses necessary!

1. Connect all repeaters to a switch
2. Install and run the client on a local PC/VM
3. Enter the master repeater IP address, port and the assigned internet login credentials
4. Login into the portal

## System Architecture: on premise software client and cloud host



Selected features	Details
Service notifications:	System up/down: internet, network, PC or application issue
Peer notifications:	Master and peer repeaters, MNIS and applications up/down
	Call details: group/private, voice/data, length, source/target, repeaters, RSSI, etc.
	Call failures: various busies, out of range, race conditions, etc.
	Repeater blocking: interference FCC type I and II, CWID/BSI repeat
	Repeater alarms: PA, power, battery, VSWR, hardware, etc. (over 70)
	Alerts when VSWR, TX power, PA and modem temperature exceed thresholds
Logging (client):	Local logging to text and CSV files of all calls, failures, repeater alarms and other events
Cloud Servers:	Centralized logging of all calls, failures, repeater alarms and other events
	Email notifications
Other:	Secure and encrypted link to fault tolerant cloud servers

Requirements	Details
Thin on-premise client	PC or Virtual Machine with Windows 7 or greater, 1GB RAM, Atom-class CPU
	Connectivity: master repeater and Internet access on outbound-only port. Multi-homed system support for Internet access over guest networks, WiFi, or cellular



### UNIQUE EXPERIENCE

Understanding the critical requirements of your business, we have grown by listening and appreciating your trust. We can only make great products if they need no support or, as needed, we are there to promptly help you. Since 2001 we have provided device manufacturers, dealers and end-customers best-in-class prompt and hands-on support. All of our products are developed by us, right here in the USA. They are tightly integrated and modular to scale seamlessly and meet your requirements now and in the future.

TABLETmedia, Inc.  
San Francisco, CA - USA  
Tel: +1 (415) 567-8100

<https://tablet.media> - 6/19  
Copyright © 2001-2019 TABLETmedia, Inc. - All rights reserved.  
TRBOmonitor™ is a trademarks of TABLETmedia, Inc.  
All other trademarks belong to their respective companies.

**TABLET**media